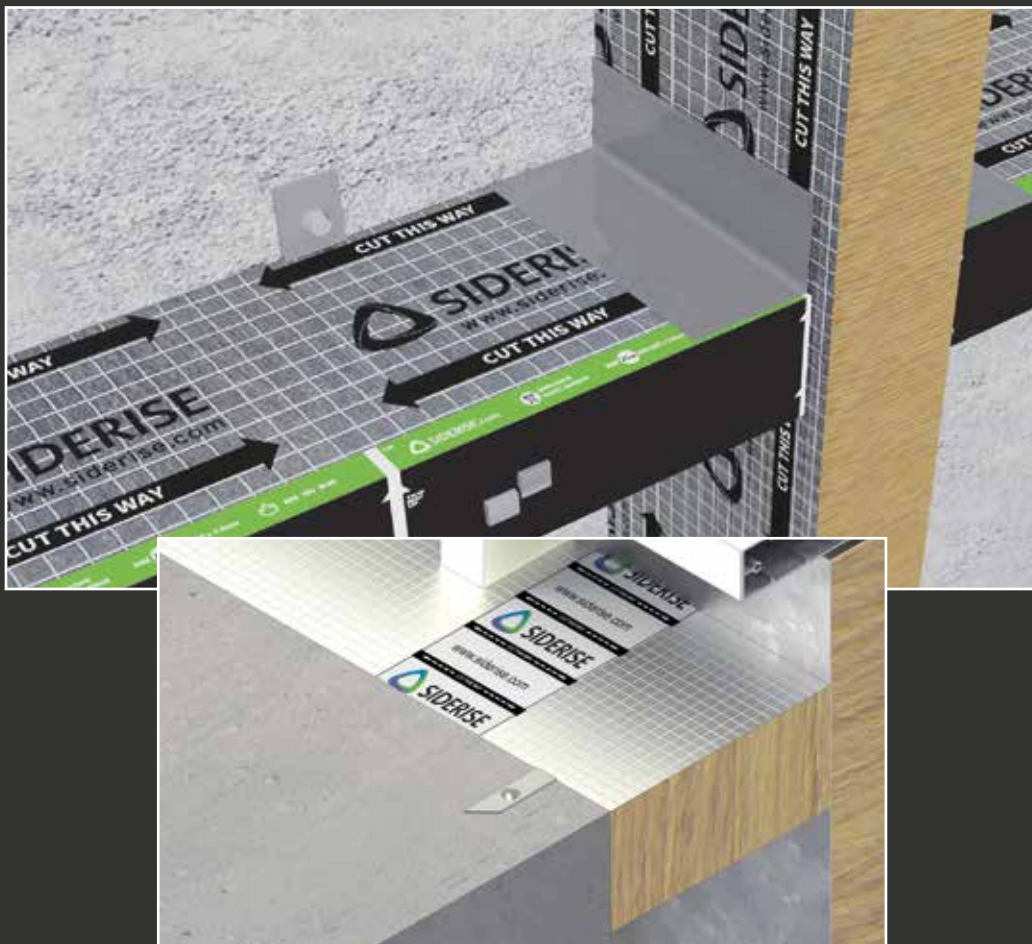




FIRESTOP

Discover the difference

Fire Barriers
Passive fire protection,
compartmentation



Premium passive fire and

For 45 years, Siderise has been providing premium passive fire and acoustic insulation solutions to help create beautiful and safe buildings without compromise.

For 45 years, Siderise has been providing premium passive fire and acoustic insulation solutions to help create beautiful and safe buildings without compromise.

Siderise contributes to construction projects all over the world, placing technical, accredited and third-party certified product performance at the centre of its passive fire protection products and solutions.

Our responsibility for optimum safety of façades and curtain walls starts at the early

stage of collaboration on the concept and design of the building.

We have the technical expertise and insight to determine what is needed to construct a safer building and we work with our clients to ensure the integrity of a building's design and construction.

Fassawall BV is Siderise's partner for the Benelux.

We have the ingenuity to be your project partner, working together seamlessly from design concept to on-site installation based



acoustic insulation solutions

on our technical data, product quality and excellent service support.

Our products have been tested in accordance with European standards, including EN1364-4, EN1364-3 and EN1366-4

All our leading passive fire protection systems are certified. Siderise fire protection for curtain walls was the first firestop to be launched internationally and our first reactive solution for ventilated façades in Europe.



Fire safety for façades

Siderise has been no. 1 in the design and development of fire protection solutions for curtain walls for over 25 years.

Effective compartmentation measures combined with professional installation can limit the spread of fire and, more specifically, harmful gases, allowing a building to be evacuated, saving lives and property, and providing a safer environment for firefighters to do their work.

Siderise barrier systems can be easily installed to seal the space between the curtain wall and the structure.

These systems are suitable for use as a horizontal and vertical fire protection system.

They effectively prevent the rapid spread of fire, gases and smoke.

In addition, they deliver qualified acoustic performance that significantly improves sound attenuation between rooms.

The unique production method helps these solid products absorb normal façade deflection and tolerances.

The Siderise product range:

- *Market-leading fire performance.*
- *Qualified acoustic performance.*
- *Unique construction provides unrivalled movement performance.*
- *Quick and simple to install.*



Barriers and firestops for curtain walling

Solutions for fire stop, smoke stop and sound barrier requirements in all architectural cladding panel applications.

The CW-FS barriers and firestops in Siderise's extensive range effectively seal walls against smoke and fire. The products also act as an effective acoustic barrier and interior seal.

Based on the experience gained through being the premier supplier to the UK curtain walling market, the products represent an unrivalled combination of fully qualified performance, practical installation and service benefits.

The primary function of the CW system is to maintain continuity of fire resistance by sealing the gap between the compartment floors or walls and the external curtain wall, both horizontally and vertically.

Benefits

- *Market-leading fire protection and smoke sealing.*
- *Suitable for horizontal and vertical installation.*
- *Patented product construction provides ability to accommodate façade movement.*
- *Fully qualified acoustic performance.*
- *Simple and quick to install.*
- *Third-party certification.*
- *Third-party approved: Certifire CF563.*
- *Fully compliant with EU legislation.*
- *Tested utilising BS 476 and EN 1364-4 in accordance with EAD, CWCT and ASFP guidelines.*

Cavity barriers for ventilated wall cladding

Siderise RH horizontal and RV vertical cavity barrier systems represent the default choice for market-leading, high-performance cavity barrier applications.

Siderise RH horizontal cavity barriers have been developed specially to meet the requirements for cavity barriers used in drained and ventilated façades. They ensure that the system drains all moisture from the façade construction, whilst maintaining airflow and providing an effective hot smoke and fire seal in the event of exposure to fire.

Siderise has developed two horizontal solutions: RH25(G/S) for air gaps up to 25 mm and RH50(G/S) for air gaps up to 50 mm. The product range meets current market requirements and has been tested to ASFP guidelines: 'Open-state' cavity barriers used in external cladding or building

structure in accordance with the principles of EN1363-1. See ASFP document with technical guidance document - TGD 19 (July 2014, revised November 2017).

Siderise RV cavity barriers for rainscreen cladding are used to fill the void between the external envelope and internal structure (cavity). By fully sealing the cavity, they assist ventilated façades to function by maintaining air-pressurisation compartmentation. Importantly, the unique stone wool lamella core construction enables the vertical barriers to accommodate the movements normally associated with rainscreen façades.



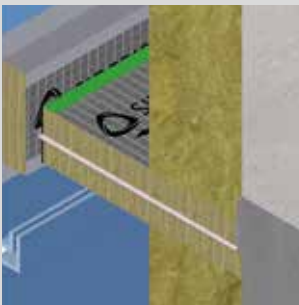
Siderise barriers product overview



Siderise horizontal barriers for compartmentation with intumescent glazing tape in cavity.



Siderise vertical barriers for compartmentation without intumescent glazing tape in cavity.



Siderise vertical and horizontal barriers for cassette façades.



Siderise vertical and horizontal barriers for curtain walling.

Siderise barriers practically



Siderise Fire Barriers are custom made per project, with 60, 90 or 120 minutes of fire resistance depending on requirements.



When heat arises around the barrier, at about 90-100 degrees, the graphite strip reacts and expands. Fire cannot spread beyond that.



When the Fire Barriers are fully expanded, the space is completely closed from the front of the barrier to the rear of the cladding. Expansion of the barriers compartmentalises the façade so that the fire cannot spread across the façade via the cavity, and thus meets the standard in the Building Decree (BBL) NEN 6068.

The Fassawall & Siderise façade team

The members of our team have ample experience and technical expertise in fire, thermal and acoustic insulation.

Our teams use and help develop the enormous knowledge database in the construction industry. All our people, from Sales to Operations, are very experienced. We are committed to superior customer service and use our extensive knowledge to deliver product innovation and realise product development. With free technical guidance, we support our customers at every stage of the design process and are happy to help them choose the most suitable product for each project. Our company employs qualified people who have been working in this industry for a considerable time and who are fully committed to providing service.

Worldwide delivery

Siderise products are available worldwide from authorised distributors.

For the Benelux this is Fassawall BV:
info@fassawall.com



Installation app

Siderise has developed an easy-to-use app to efficiently record and review the installation of our products and to present the collected information in a clear and concise report.

The app's simple, easy-to-follow process records the progress and quality of installation of all our standard fire protection systems, cavity barriers and acoustic barriers. The app allows the user to effectively inspect, record and check the quality of the installation work without any problems. Most importantly, this process will reveal any issues that need to be resolved. At the start of the work, the installer can use the app on a standard smartphone or tablet to record the relevant information for the installation.

App functions

- Streamlined and contextual data entry on an iOS or Android device
- The app allows the user to easily update the data entry fields, take multiple photos of each inspected part and/or element, and record whether or not they meet the requirements
- Photos taken with the device's built-in camera record the installation and are included in the report
- A comprehensive report is immediately generated on the quality of the installation of the inspected parts and whether they are in accordance with the recommendations or, more importantly, which incorrect installations and parts need to be corrected.

Benefits for the contractor

- Improved productivity on the construction site and improved quality of work, eliminating the need for reports
- Provides clear insight into on-site conditions to be rectified and points out any issues that need to be resolved
- Offers a method to simplify documentation
- Supports management
- Contributes to contractual compliance
- Improves quality





Bettinkhorst 35
7207 BP Zutphen
The Netherlands

Tel +31 (0) 575 518 310
info@fassawall.com
www.fassawall.com

March 2023

Printing, typesetting errors and modifications reserved.